



Custom Install **series**

PRODUCT & INSTALLATION
GUIDE

INSTALLATION GUIDE



Custom Install Trimless Series Features

All models feature our new 'Trimless' grilles, held in place by high strength Neodymium magnets covering the entire product for that true trimless, stealth look.

All models also feature our unique Tri-Grip® fixing design. This 'dog' style fixing provides a greater contact surface area than other types in no less than 3 different areas on the single fixing. The Tri-Grip fixings are made from a tough re-enforced polymer, giving a secure fixing.

Pre-construction brackets can be purchased for all models. These are fitted prior to plaster board (sheet rock) fixing and provide a guide to cut around.

300 Series

- Second generation RST® bass drivers. The 300 Series is also the first range of speakers to feature a 8" version of the RST driver.
- C-CAM® gold dome tweeter. Monitor Audio's famous 25mm gold C-CAM dome. Improvements to the surround and motor system have extended the frequency response to beyond 30 kHz
- The LCR models employ a unique Inverted Dual Concentric (IDC®) pivoting mid-range/tweeter module, providing up to 18 degrees of movement and allowing the sound to be directed towards the desired listening zone. These models offer superior performance and flexibility over typical 2-way or fixed angle speaker designs
- The FX model features a switchable di-pole mode. There is a three position switch to control this feature. It can be set to bi-pole (normal operation), di-pole, or trigger. When set to trigger, the di-pole mode is controlled by a 12v trigger found in high end AV amplifiers/receivers
- The high frequency level, mid frequency level (not on FX) and boundary compensation controls facilitate a wider range of possible adjustments.

200 Series

- C-CAM® bass drivers. The renowned C-CAM (Ceramic Coated Aluminium Magnesium alloy) is an innovative alloy material that exhibits ideal mechanical properties for use in high performance loudspeaker cones and diaphragms
- C-CAM® gold dome tweeter. The pivoting tweeter is based on Monitor Audio's famous 25mm gold C-CAM dome. Improvements to the surround and motor system have extended the frequency response to beyond 30 kHz
- The LCR models employ a unique Inverted Dual Concentric (IDC®) pivoting mid-range/tweeter module, providing up to 18 degrees of movement and allowing the sound to be directed towards the desired listening zone. These models offer superior performance and flexibility over typical 2-way or fixed angle speaker designs
- The FX model features a switchable di-pole mode. This is manually set by changing the position of the switch on the product. A front mounted switch is provided to select between bi-pole (monopole) or di-pole operation, dependant on system installation. This enhances the whole movie experience when used in a 7.1 channel system
- High frequency level and boundary compensation (excluding the FX model) controls facilitate a wider range of possible adjustments.

100 Series

- MMP®II cone technology. The MMP®II (Metal Matrix Polymer) cone material uses a high-pressure injection moulding process to achieve different thicknesses at critical points in the cone geometry
- C-CAM® tweeter. The new tweeter utilises a pivoting action to provide optimum imaging and flexible set-up options. High frequency level control is provided to offer a degree of balance adjustment once installation is completed.

Painting the Grilles



NOTE: If choosing to paint the grille, we recommend you follow these simple steps:

1. Remove the membrane scrim from the inside of the grille.
2. Paint all grilles required for the installation with the same batch of paint (if they are to be the same colour). Spray paint is easier to apply or use a stippling action when brushing to avoid blocking the holes of the grille.
3. When dry, attach the spare membrane scrim (supplied) into the inside of the grille.
4. Fit the grille to the speaker (s).

Prior to Fitting the Custom Install Series Speakers



CAUTION: These Custom Install loudspeakers can only be fixed into plasterboard (dry-lined) or suspended ceilings/ walls with a thickness of up to 45mm (1 3/4"). Solid wall installation will require channeling out and frame work constructed to provide a structure for the Tri Grip® dog legs to clamp to. For safety reasons, if you are unsure of your ability to provide a secure and safe fixing, do not attempt to fix these speakers, please obtain the services of a competent and qualified trades person.



CAUTION: Ensure that there are no water pipes or electricity cables running within the wall structure before cutting the speaker apertures. Work from secure steps and avoid trailing wires.

Over Tightening Warning



ATTENTION INSTALLERS:

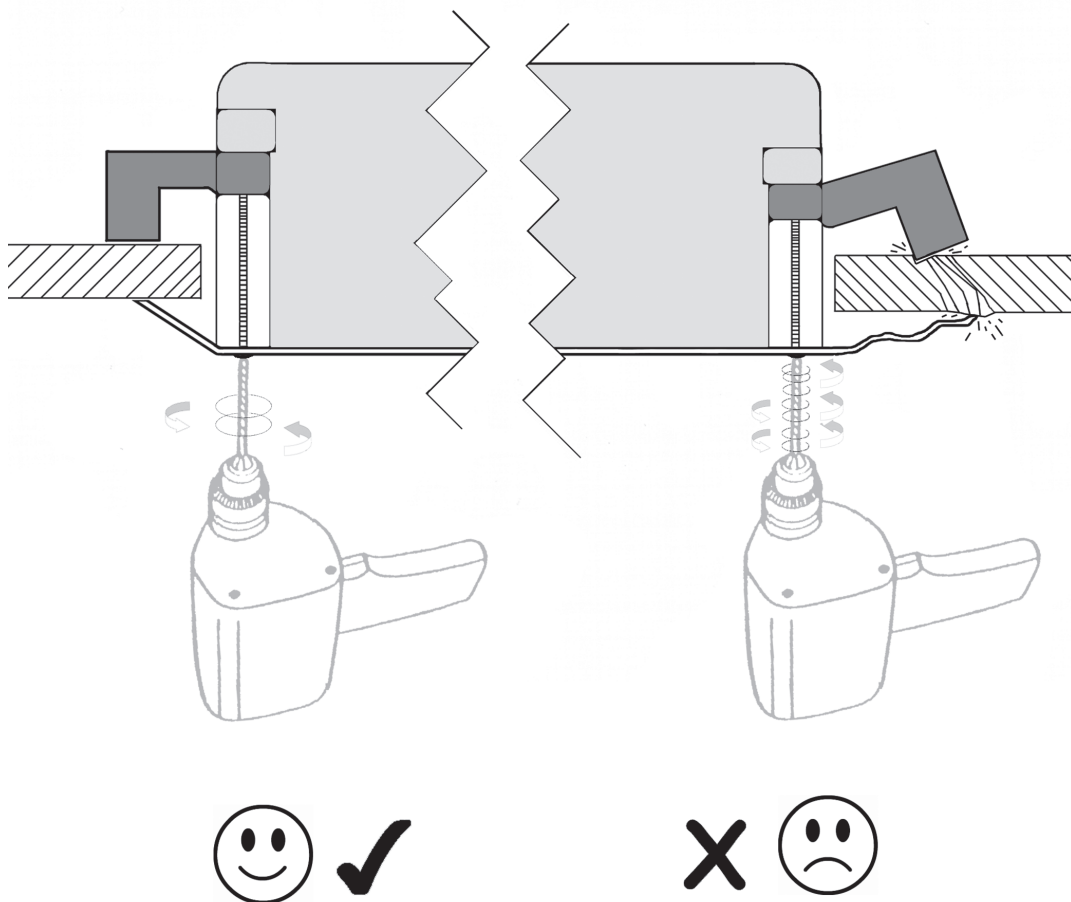
Do not over-tighten the Tri-Grip Dog Leg clamps. Over tightening the clamping mechanism on any in ceiling/ in wall speaker can result in damage to the speaker mounting hardware, ceiling/ wall or speaker frame, and/ or deflection in the speaker frame during installation.

If you notice any of the above during installation, you have overtightened the Tri Grip dog leg. Back off the mounting screw until deflection is reduced to allow the product to sit firmly against the ceiling / wall.



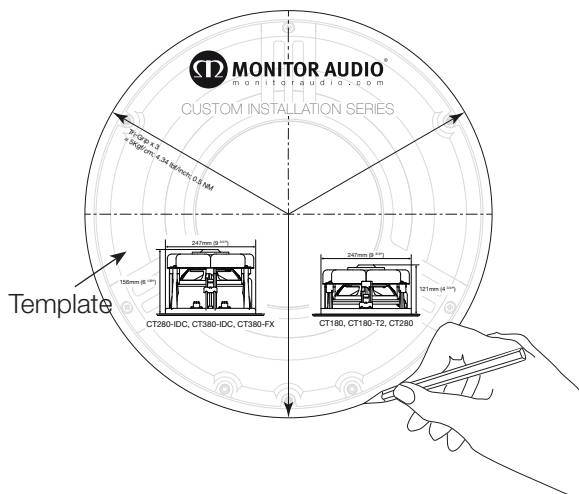
Do not exceed 5Kgf/cm (4.34 lbf/inch.) or 0.5 NM when tightening the Tri Grip dog leg screws.

When are using a cordless screwdriver/ drill to install this product ensure the clutch is set to it's lowest setting to avoid from over-tightening and damaging the mounting hardware.

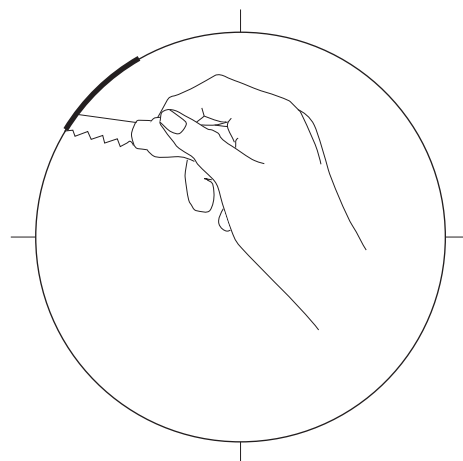


Fitting the Custom Install Loudspeakers

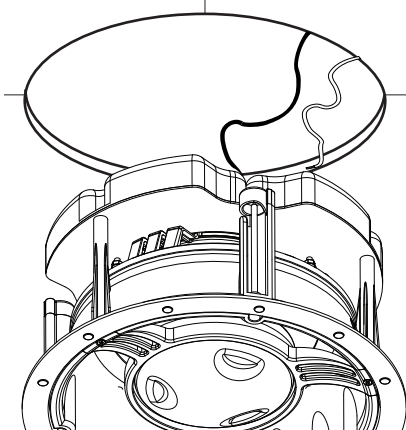
- 1** Draw around template and mark centre lines if necessary



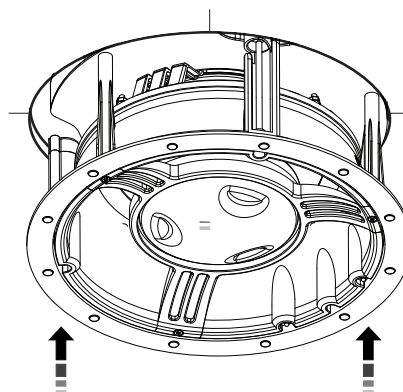
- 2** Cut around marked line



- 3** Connect speaker cables by pushing down on the terminals and clamping the bare wire in the through hole.

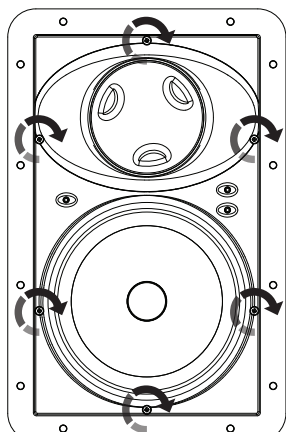
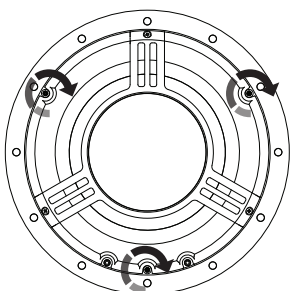


- 4** Guide speaker into cut out

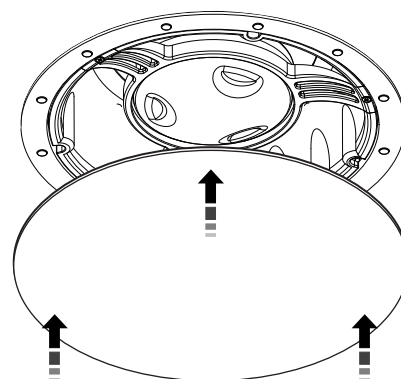


- 5** Tighten 3 Tri-Grip screws on the in ceiling models or the 6 Tri-Grip screws on the in wall models.

See over tightening warning.



- 6** Fit grilles. They are held in place magnetically and should 'snap' into place.



Specifications

	CT165	CT165-T2	CT180	CT180-T2	WT165	WT180
Frequency Response	60Hz - 25kHz	60Hz - 25kHz	50Hz - 25kHz	50Hz - 25kHz	60Hz - 25kHz	50Hz - 25kHz
Impedance	6 Ohms	6 + 6 Ohms	6 Ohms	6 Ohms	6 Ohms	6 Ohms
Sensitivity (1W@1m)	88.5dB	88.5dB	90dB	90dB	88.5dB	90dB
Maximum SPL	107.4dBA	107.9dBA	111.6dBA	111.6dBA	107.4dBA	111.6dBA
Power Handling (RMS)	65W	65W	120W	120W	65W	120W
Recommended Amp Requirements	20-65W	20-65W	30 - 120W	30 - 120W	20-65W	30-120W
Drive Unit Complement	1 x 6.5" MMP®II Cone Bass Driver 1 x 1" C-CAM® Pivoting, Gold Dome Tweeter	1 x 6.5" MMP®II Cone Bass Driver 2 x 1" C-CAM® Pivoting, Gold Dome Tweeter	1 x 8" MMP®II Cone Bass Driver 1 x 1" C-CAM® Pivoting, Gold Dome Tweeter	1 x 8" MMP®II Cone Bass Driver 2 x 1" C-CAM® Pivoting, Gold Dome Tweeter	1 x 6.5" MMP®II Cone Bass Driver 1 x 1" C-CAM® Pivoting, Gold Dome Tweeter	1 x 8" MMP®II Cone Bass Driver 1 x 1" C-CAM® Pivoting, Gold Dome Tweeter
Adjustment Controls	+3dB / 0dB / -3dB HF Level Switch	None	+3dB / 0dB / -3dB HF Level Switch			
Overall Diameter/Dimensions	250mm (9 13/16")	285mm (11 1/4")	285mm (11 1/4")		370 x 250mm (14 9/16 x 9 13/16")	441 x 288mm (17 3/8 x 11 5/16")
Overall Depth	118mm (4 5/8")	125mm (4 15/16")	125mm (4 15/16")		89.5mm (3 1/2")	97mm (3 13/16")
Cut Out Diameter/Dimensions	211mm (8 1/4")	247mm (9 3/4")	247mm (9 3/4")		332 x 213 mm (13 1/16 x 8 3/8")	387 x 234 mm (15 1/4 x 9 3/16")
Mounting Depth	114mm (4 1/2")	121mm (4 3/4")	121mm (4 3/4")		85.5mm (3 3/8")	93mm (3 11/16")
Fixing Type	3 Position Tri Grip® Dog Leg Fixings	3 Position Tri Grip® Dog Leg Fixings	6 Position Tri Grip® Dog Leg Fixings			
Construction Material	Mineral Filled ABS Plastic (UL V0 Fire Retardant, RoHS Compliant)					
Pre construction Bracket	CB6 (Purple)	CB8 (Green)	CB8 (Green)	WB6 (Purple)	WB8 (Green)	
Weight	1.92Kg (4lb 4oz)	2.08Kg (4lb 10oz)	2.72Kg (6lb)	3Kg (6lb 10oz)	2.21Kg (4lb 14oz)	3.08Kg (6lb 12oz)

	CT265	CT265-IDC	CT265-FX	CT280	CT280-IDC	WT265	WT280	WT280-IDC
Frequency Response	60Hz - 30kHz	60Hz - 30kHz	60Hz - 30kHz	50Hz - 30kHz	50Hz - 30kHz	55Hz - 30kHz	45Hz - 30kHz	45Hz - 30kHz
Impedance	6 Ohms	6 Ohms	6 Ohms	6 Ohms	6 Ohms	6 Ohms	6 Ohms	6 Ohms
Sensitivity (1W@1m)	88.5dB	88.5dB	88.5dB	90dB	90dB	88.5dB	90dB	90dB
Maximum SPL	108dBA	108dBA	108dBA	111.6dBA	111.6dBA	107.4dBA	111.6dBA	111.6dBA
Power Handling (RMS)	75W	85W	85W	120W	120W	65W	120W	120W
Recommended Amp Requirements	20-65W	20-85W	20-85W	30 - 120W	30 - 120W	20-65W	30-120W	30-120W
Drive Unit Complement	1 x 6.5" C-CAM® Cone Bass Driver 1 x 1" C-CAM® Pivoting, Gold Dome Tweeter	1 x 6.5" C-CAM® Cone Bass Driver Pivoting Inverted Dual Concentric Module (IDC), Housing: 1 x 4" C-CAM® RST® Inverted Mid Range Driver. 1 x 1" C-CAM® Gold Dome Tweeter	1 x 6.5" C-CAM® Cone Bass Driver 2 x 1" C-CAM® Fixed Angle Gold Dome Tweeters	1 x 8" C-CAM® Cone Bass Driver 1 x 1" C-CAM® Pivoting, Gold Dome Tweeter	1 x 8" C-CAM® Cone Bass Driver Pivoting Inverted Dual Concentric Module (IDC), Housing: 1 x 4" C-CAM® RST® Inverted Mid Range Driver. 1 x 1" C-CAM® Gold Dome Tweeter	1 x 6.5" C-CAM® Cone Bass Driver 1 x 1" C-CAM® Pivoting, Gold Dome Tweeter	1 x 8" C-CAM® Cone Bass Driver 1 x 1" C-CAM® Pivoting, Gold Dome Tweeter	1 x 8" C-CAM® Cone Bass Driver Pivoting Inverted Dual Concentric Module (IDC), Housing: 1 x 4" C-CAM® RST® Inverted Mid Range Driver. 1 x 1" C-CAM® Gold Dome Tweeter
Adjustment Controls	+3dB / 0dB / -3dB HF Level Switch Boundary Compensation Switch		+3dB / 0dB / -3dB HF Level Switch Bi Pole / Di Pole Switch	+3dB / 0dB / -3dB HF Level Switch Boundary Compensation Switch				
Overall Diameter/Dimensions	118mm (4 5/8")	250mm (9 13/16")		285mm (11 1/4")		370 x 250mm (14 9/16 x 9 13/16")	441 x 288mm (17 3/8 x 11 5/16")	
Overall Depth	153mm (6")	153mm (6")		125mm (4 15/16")	160mm (6 5/16")	89.5mm (3 1/2")	97.5mm (3 13/16")	
Cut Out Diameter/Dimensions	211mm (8 1/4")	211mm (8 1/4")		247mm (9 3/4")		332 x 213 mm (13 1/16 x 8 3/8")	387 x 234 mm (15 1/4 x 9 3/16")	
Mounting Depth	114mm (4 1/2")	149mm (5 7/8")		121mm (4 9/4")	156mm (6 1/8")	85.5mm (3 3/8")	93mm (3 11/16")	
Fixing Type	3 Position Tri Grip® Dog Leg Fixings		3 Position Tri Grip® Dog Leg Fixings		6 Position Tri Grip® Dog Leg Fixings			
Construction Material	Mineral Filled ABS Plastic (UL V0 Fire Retardant, RoHS Compliant)							
Pre construction Bracket	CB6 (Purple)	CB6 (Purple)		CB8 (Green)	CB8 (Green)	WB6 (Purple)	WB8 (Green)	
Weight	2.04Kg (4lb 8oz)	2.54Kg (6lb 10oz)	2.08Kg (4lb 10oz)	2.8Kg (6lb 2oz)	3.42Kg (7lb 8oz)	2.26Kg (5lb)	3.1Kg (6lb 14oz)	3.6Kg (7lb 14oz)

	CT380-IDC	CT380-FX	WT380-IDC
Frequency Response	45Hz - 30kHz	45Hz - 30kHz	45Hz - 30kHz
Impedance	6 Ohms	6 Ohms	6 Ohms
Sensitivity (1W@1m)	90dB	90dB	90dB
Maximum SPL	112dBA	111.6dBA	112dBA
Power Handling (RMS)	150W	120W	150W
Recommended Amp Requirements	40 - 150W	30 - 120W	40-150W
Drive Unit Complement	1 x 8" C-CAM® Cone Bass Driver Featuring RST Pivoting Inverted Dual Concentric Module (IDC), Housing: 1 x 4" C-CAM® RST® Inverted Mid Range Driver. 1 x 1" C-CAM® Gold Dome Tweeter	1 x 8" C-CAM® Cone Bass Driver Featuring RST 2 x 1" C-CAM® Fixed Angle Gold Dome Tweeters	1 x 8" C-CAM® Cone Bass Driver Featuring RST Pivoting Inverted Dual Concentric Module (IDC), Housing: 1 x 4" C-CAM® RST® Inverted Mid Range Driver. 1 x 1" C-CAM® Gold Dome Tweeter
Adjustment Controls	+3dB / 0dB / -3dB HF Level Switch Boundary Compensation Switch	+3dB / 0dB / -3dB HF Level Switch Bi Pole / Di Pole Switch with Additional 12v Trigger Switching	+3dB / 0dB / -3dB HF Level Switch +3dB / 0dB / -3dB MF Level Switch Boundary Compensation Switch
Overall Diameter/ Dimensions	285mm (11 1/4")		441 x 288mm (17 3/8 x 11 5/16")
Overall Depth	160mm (6 5/16")		101.5mm (4")
Cut Out Diameter/ Dimensions	247mm (9 3/4")		387 x 234 mm (15 1/4 x 9 3/16")
Mounting Depth	156mm (6 1/8")		97.5mm (3 13/16")
Fixing Type	3 Position Tri Grip® Dog Leg Fixings	6 Position Tri Grip® Dog Leg Fixings	6 Position Tri Grip® Dog Leg Fixings
Construction Material	Mineral Filled ABS Plastic (UL V0 Fire Retardant, RoHS Compliant)		
Pre construction Bracket	CB8 (Green)		WB8 (Green)
Weight	3.64Kg (8lb)	3.2Kg (7lb)	4.1Kg (9lb)



Monitor Audio Ltd.
24 Brook Road
Rayleigh, Essex
SS6 7XJ
England
Tel: +44 (0)1268 740580
Fax: +44 (0)1268 740589
Email: info@monitoraudio.co.uk

Designed and Engineered in the United Kingdom

© **Monitor Audio.**

Version 1 2012

